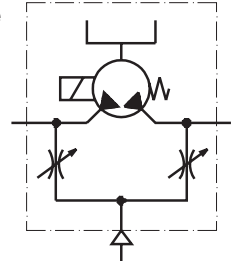




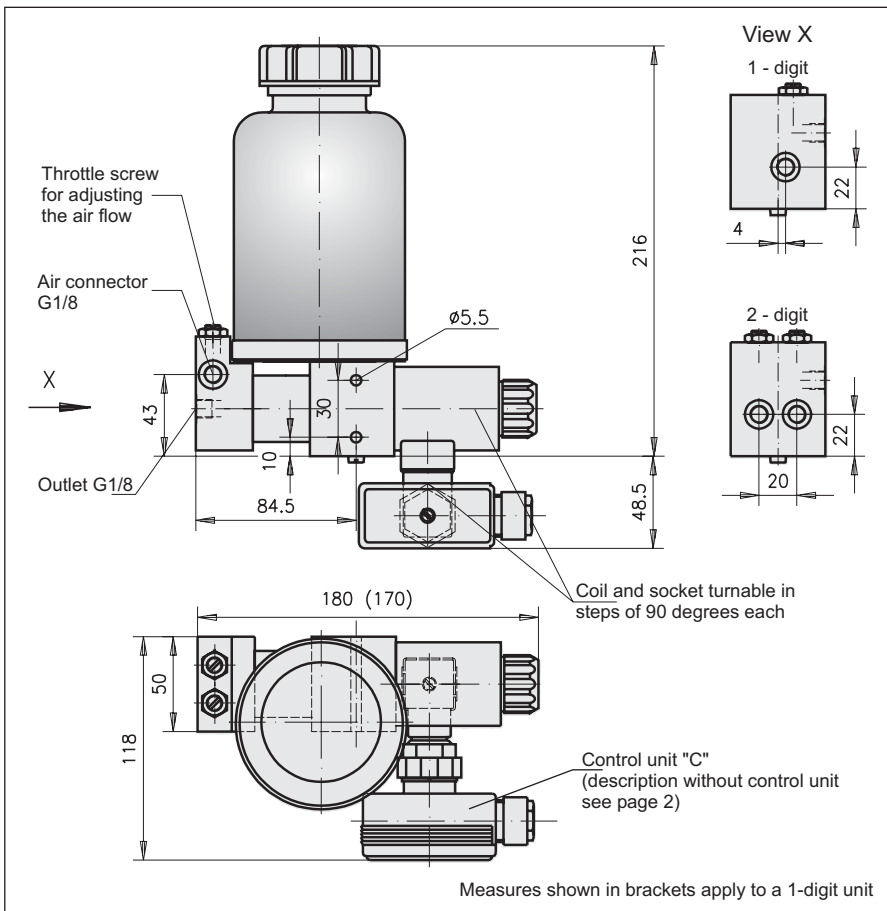
- Subject to modifications -



### OL-mini aggregate GOI-A

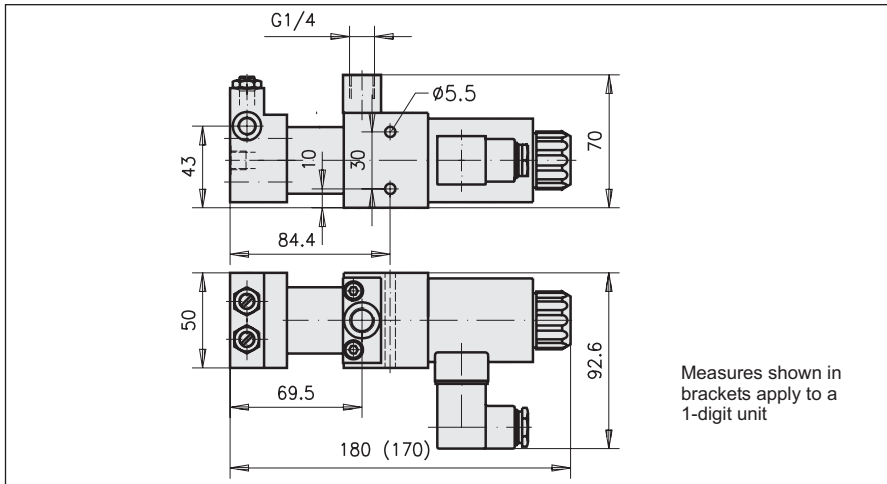


- Up to two outlets
- Small-sized construction

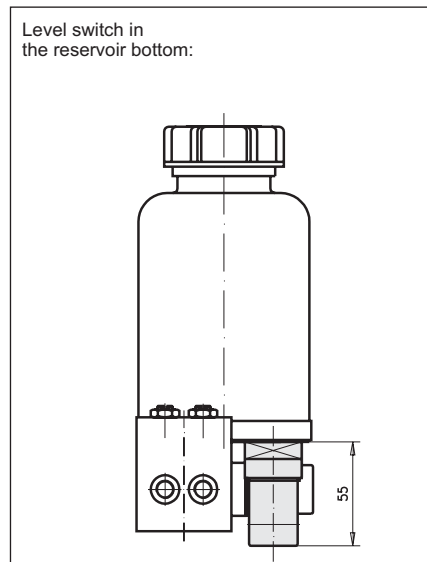
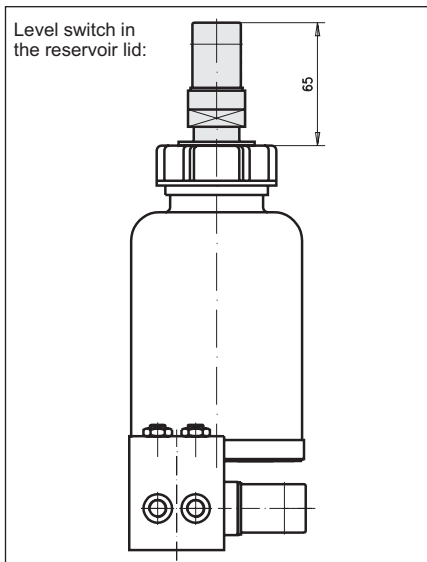


### Technical data:

Delivery volume per stroke and outlet:	15 mm <sup>3</sup>
Number of strokes at max.:	approx. 250 min <sup>-1</sup>
Actuation time at min.:	approx. 0,1 s
The actuation and off-times depend on the magnet, the number of digits, and the medium.	
Medium:	Oil from 11 to 1900 cP
Ambient temperature:	-10 ... +50 °C
Air pressure at max.:	6 bar
Reservoir capacity:	0,7 l
Version without reservoir:	Suction connector G1/4
Inserting position:	Suction connector above
Material:	
Pump body:	Aluminium
Reservoir:	Polyethylene, transparent
Gaskets:	Viton
Weight:	
GOI-A/.../0	1,40 kg
GOI-A/.../7	1,65 kg
Level switch	0,10 kg


**Version without reservoir:**

In the version without reservoir, a G1/4 female thread connection piece is mounted.

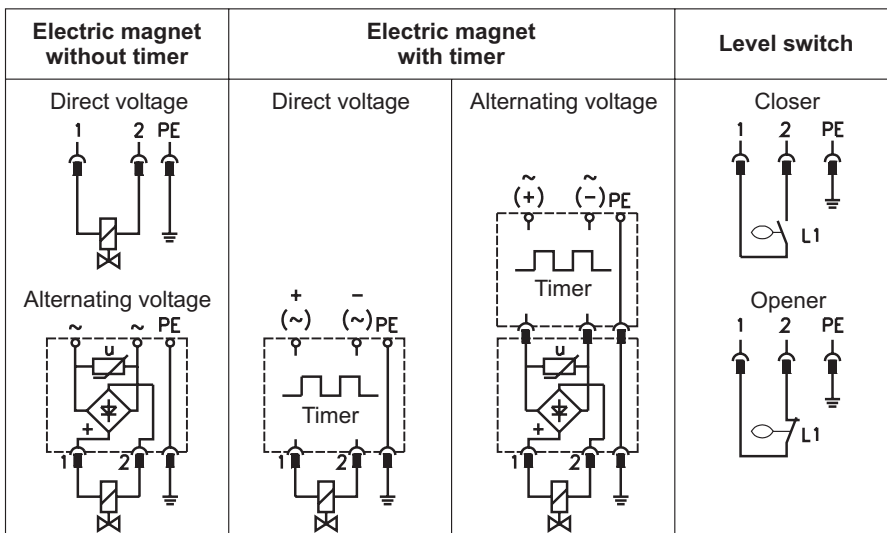

**Electrical data:**
**Level switch**
**with minimum level checking:**

Switching power: 10 W  
30 VA  
Switching current at max.: 0,5 A  
Switching voltage at max.: 230 VUC  
Plug-in connection: DIN 43650

**Time control:**

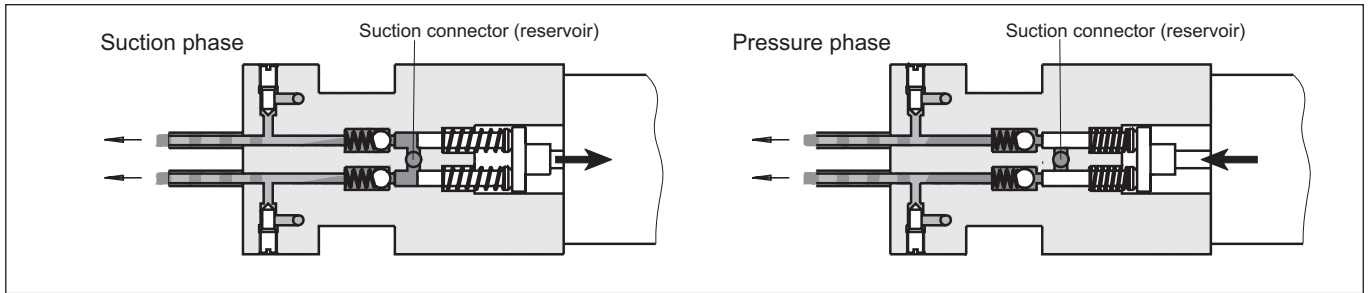
Housing material: Polyamide  
Temperature range: 0 ... 55 °C  
Protection type: IP 65  
Gasket: NBR  
Power consumption: 1,0 W  
Off-duty time range: 0,5 sec ... 10 h  
Input voltage: 230 VAC  
or 24 VDC  
Switching power: at 230 V 0,5 A  
at 48 V 1,5 A

- Subject to modifications -


**Electric magnet:**

Insulation class: F  
Voltage: 24 VDC or 230 VAC  
Rated power: 30 W  
Current at 24 VDC: 1,27 A  
Current at 230 VAC: 0,15 A  
Switch-on duration: 100 %  
Special voltage available, please ask for!  
Plug-in connection: DIN 43650  
Protection type: IP 65

The magnet will always be direct voltage operated. When connecting it to alternating voltage, the rectifier within the mains socket serves to generate direct voltage. Then the direct voltage at the magnet will be approx. 10 % lower than the alternating voltage at the mains socket.



**Operation pump:**

The aggregate consists of a one- or two-digit piston pump, an electric magnet, a control unit and an oil reservoir.

**Suction phase:** The piston is put back by means of spring tension. Due to the negative pressure generated, the medium will be sucked out of the reservoir.

**Pressure phase:** The magnet actuated piston delivers the medium into the airflow. By virtue of the airflow preset via the throttle valves the resulting oil film will be continuously transported to the friction and lubrication points.

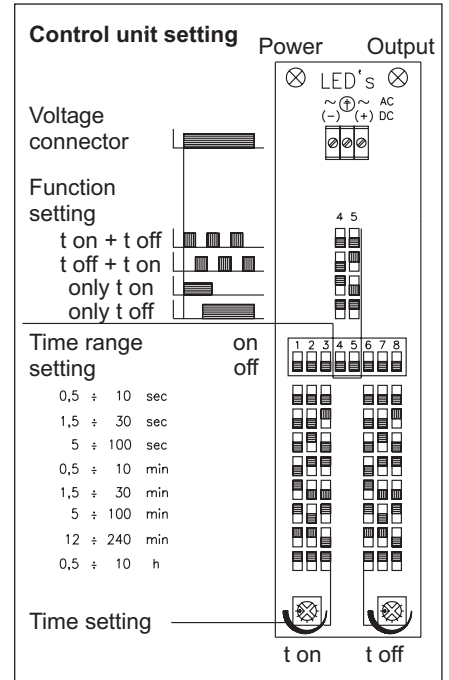
**Assembly note:**

The piston space is connected with the reservoir. Therefore the reservoir needs to be emptied prior to the magnet's disassembly.

**Function control unit:**

The control unit is to be mounted on the unit socket of the magnet.

The clock generator function is set on switches 4 and 5. Both switches should be in their off positions. The actuation time (t on) of the magnet is set via the switches 1 to 3 and the potentiometer (t on). The time should be set to approx. 1 second. The off-duty time (t off) is set at the switches 6 to 8 and the potentiometer (t off). The setting can be made in the time ranges between 0,5 sec and 10 h.



**Order-**

**designation:** OL-mini aggregate



Outlets	Reservoir [l]	Control unit	Level switch	Function control	Magnet ED [%]	Connecting voltage
1-digit ①	0,7 ⑦	24-48VDC ⓑ	in the reservoir lid:	without ⓪	100 Ⓐ	24VDC ⓖ1
			Closer ⑥			
2-digit ②	without ⓪	110-230VAC ⓒ	in the reservoir bottom:	without ⓪	100 Ⓐ	230VAC Ⓦ1
			Closer ⑥A			
			Opener ⑧A			
			without ⓪			
		without ⓪			Special magnet <sup>1)</sup> *   *	
		without ⓪			without magnet <sup>2)</sup> ⓪   ⓪	

**Order-example:**

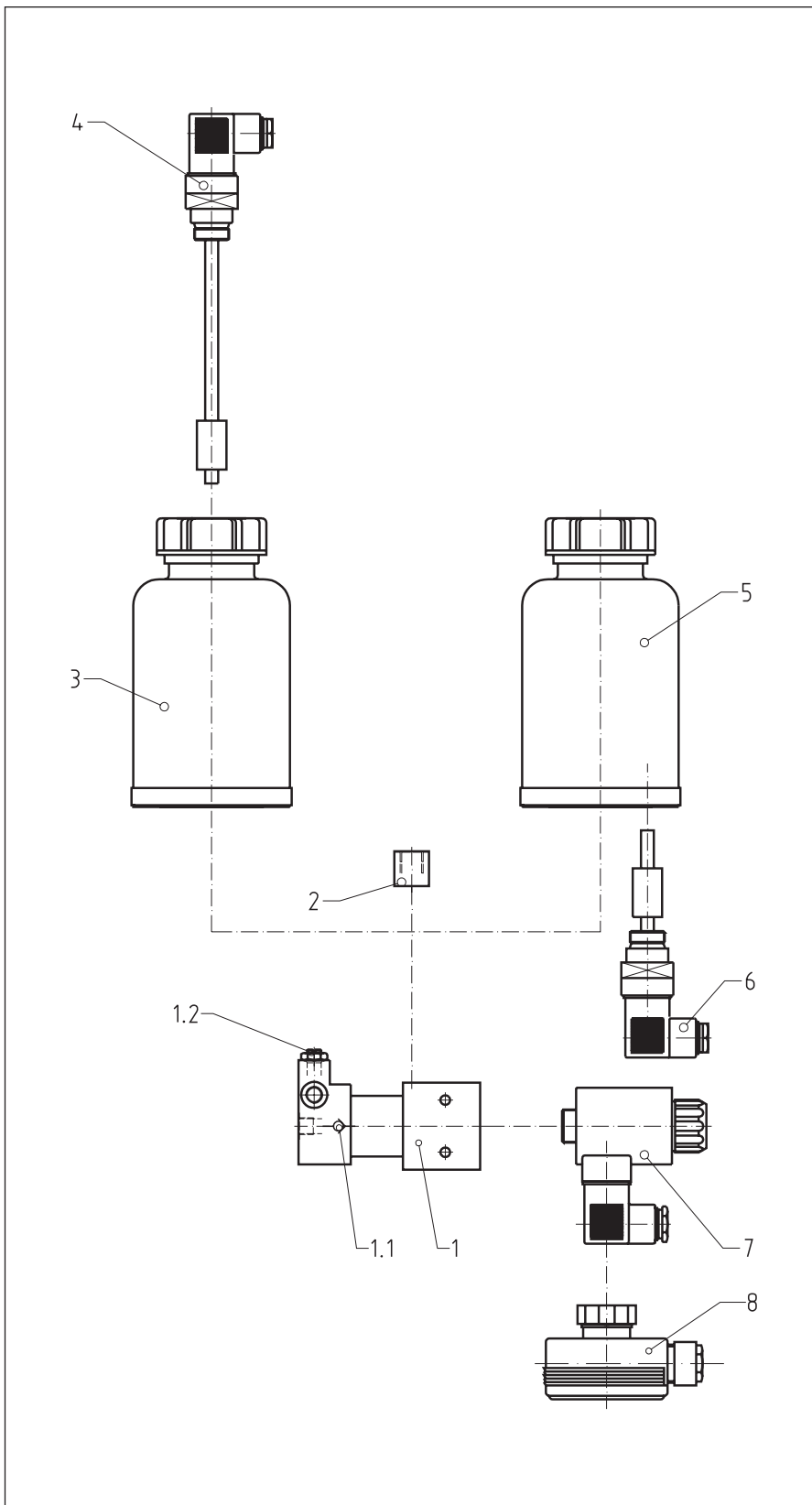
OL-mini aggregate GOI-A, 2 outlets, reservoir 0,7 l, control unit B, without level switch, without function control, 230 VAC.

**Order-designation:**

**OL-mini aggregate**  
GOI-A/2/7/B/0/0/A/W1

- <sup>1)</sup> Magnets with special voltage available upon request.
- <sup>2)</sup> Without magnet (spare part).

- Subject to modifications -


**Spare parts:**

Pos.	Designation	Order-no.
1	Pump body including Pos. 1.1, 1.2	
	1-digit	105.201-65
	2-digit	105.202-65
1.1	Check valve (1x per outlet)	330.356-64
1.2	Throttle screw (1x per outlet)	165.337-65
2	Base plate G1/4	330.370-65

**Version without level switch:**

3	Reservoir 0,7 l without lid	330.360-65
	Lid	165.327-65

**Version level switch  
in the reservoir lid:**

3	Reservoir 0,7 l without lid	330.360-65
4	Level switch with reservoir lid	
	6 (Closer)	165.328-65
	8 (Opener)	165.329-65

**Version level switch  
in the reservoir bottom:**

5	Reservoir 0,7 l with lid	330.377-65
6	Level switch	
	6A (Closer)	477.053-65
	8A (Opener)	477.213-65
7	Electric magnet A/G1 24 VDC 100 %ED	330.369-65
	Electric magnet A/W1 230 VAC 100 %ED	330.373-65
	without electric magnet: Threaded plug M19x1	330.372-45
8	Control unit B 24 VDC	467.583-61
	Control unit C 230 VAC	467.583-60

	without picture: Gasket set	165.008-64
--	--------------------------------	------------

**Assembly note:**

**Before dismantling the electric magnet,  
the reservoir must be emptied.**

- Subject to modifications -