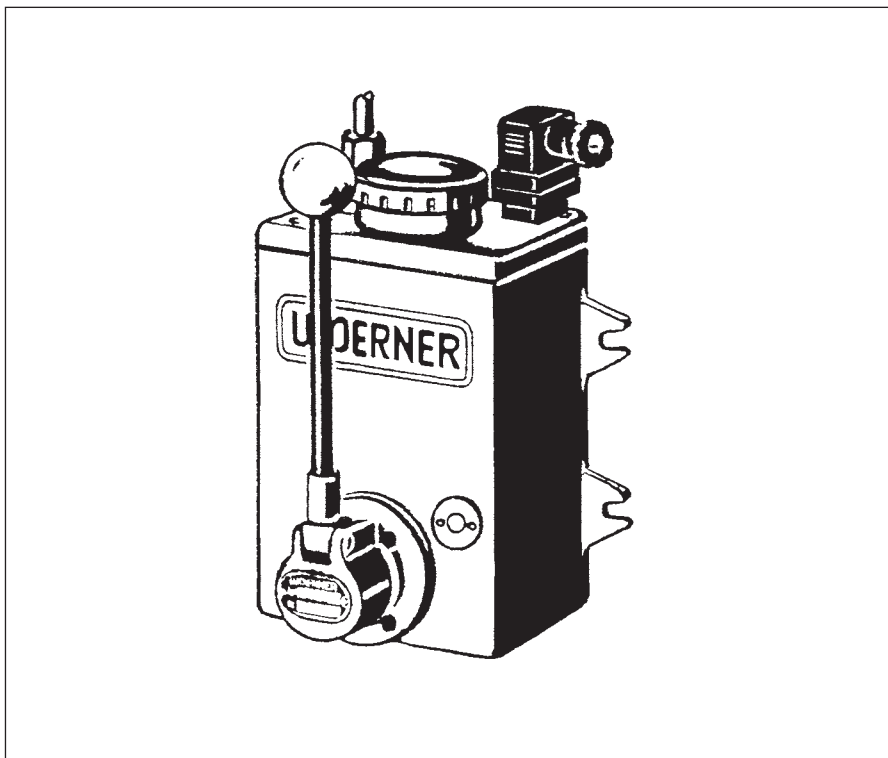




- Subject to modifications -



Hand pump PFH-E



Application:

As delivery pump in central lubrication systems

Technical data:

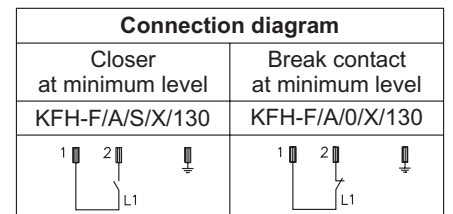
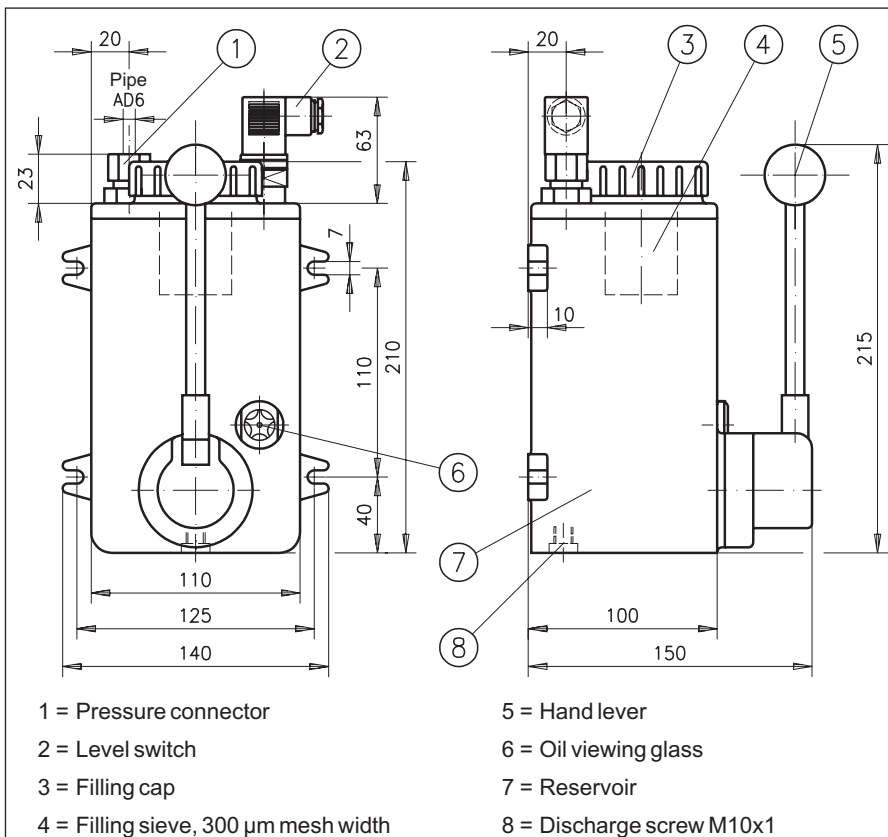
Delivery capacity:	4 cm ³ /stroke
Delivery pressure at a manual power of 70N ¹⁾ :	approx. 10 bar
Temperature range:	-10 ... +80 °C
Delivery medium:	Oil
Viscosity range:	9 ... 2700 cP
Weight:	2,7 kg
Reservoir capacity:	1 l
Material:	
Sealing:	NBR (Perbunane)
Reservoir and pump casing:	Aluminium
Pump internals:	Steel
Pipe:	Polyamide
Screwings and return valve:	Steel, galvanised

¹⁾ The delivery pressure depends on the manual power applied. A pressure control valve is not incorporated.

Electrical data level switch:

Switching voltage at max.:	230 VAC
Switching current at max.:	0,5 A
Switching power:	10 W 30 VA shortly 50 VA
System of protection:	IP 65
Plug type:	DIN 43650

For direct voltage with inductive load a spark quencher (diode, RC element, varistor) is required at the consumer.



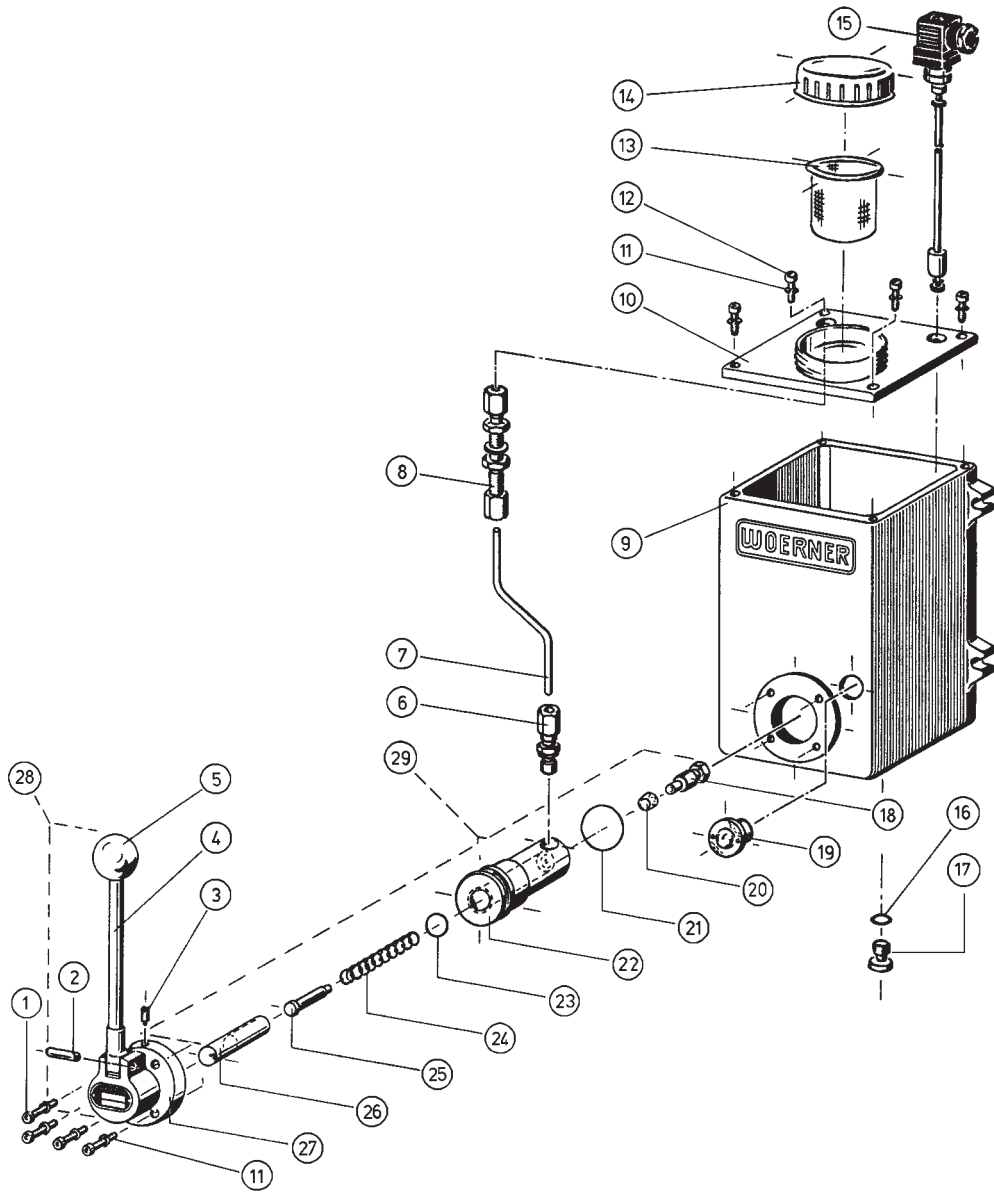
Purchase-designation:

Hand pump PFH-E / 0 / 0

Level switch	Discharge screw
without 0	without 0
Closer 6	with A
Break contact 8	



Spare parts:



- Subject to modifications -

Item Designation	Purch.-no.	Item Designation	Purch.-no.	Item Designation	Purch.-no.
1 Cheese head M4x20 DIN 912	800.912-06	for level switch without level switch	101.702-64 101.732-35	21 O-ring 35x1,5	915.201-12
2 Parallel straight pin 6x24 DIN 7	800.007-21	11 Split washer 4 DIN 7980	807.980-01	22 Pump body	101.703-35
3 Set screw M4x12 DIN 417	800.417-04	12 Cheese head M4x10 DIN 912	800.912-02	23 O-ring 18x2	915.200-86
4 Hand lever	151.010-45	13 Sieve B50	913.300-13	24 Pressure spring 1,4x10,2x83,9	911.201-58
5 Ball knob C32 DIN 319	800.319-02	14 Reservoir cap D65	913.300-39	25 Bolt	101.705-45
6 Straight screwing	951.100-11	15 Level switch Closer at min.	468.722-65	26 Piston	101.704-45
7 Pipe 6x1,15x120	101.709-42	Break contact at min.	468.714-65	27 Casing	151.005-35
8 Screwing L-SV6	950.700-01	16 Sealing ring 10x14x1	807.603-05	28 Hand lever compl. comprising items 1-5, 11, 27	151.011-65
9 Reservoir without discharge screw	101.731-25	17 Lock screw M10x1	800.908-12	29 Pump body compl. comprising items 18-26 Sealings kit	101.731-64 101.729-64
with discharge screw	101.727-65	18 Lock screw G1/8	101.706-45		
10 Cover		19 Oil viewing glass G1/2	913.000-07		
		20 Lip ring 0x8,8x4	915.400-02		