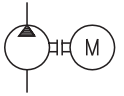




Gear-type pump unit

- GFM-D
- GFM-E
- GFM-F
- GFM-G



Technical data:

Medium: Mineral oil¹⁾
 Viscosity: 100 ... 1350 cP¹⁾
 Medium temperature: -20 ... +80 °C
 Ambient temperature: -20 ... +40 °C
 Operating pressure: (see chart 1)
 Flow rate: 0,06 ... 1,00 l/min
 (see order-designation)

– The flow rate depends on the medium viscosity, operating pressure and pump speed.

Materials:

Sealing material: NBR or FPM
 (see order-designation)

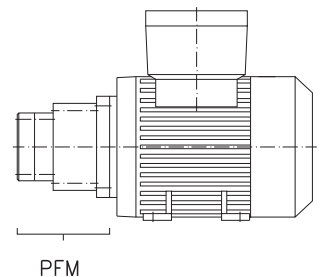
Materials of the parts

in contact with the media: Cast iron, steel

Motor:

Installation dimensions and allocation of the power outputs according to DIN 42673 and DIN 42677.

¹⁾ When using other media please check back.



PFM = Scope of supply: Gear-type pump with connection flange and clutch (without motor)

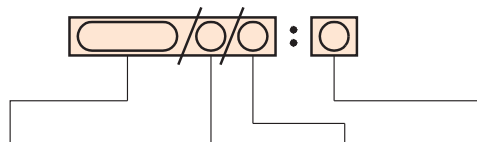
Chart 1

Pump unit		Flow rate [l/min]	max. adm. delivery press.		Motor
with motor	without motor		GFM [bar]	PFM [bar]	
GFM-D	PFM-D	0,06	60	60	Size 56 Synchronous speed = 1500 [1/min] Rated output = 0,09 [kW] Design B34 acc.to DIN IEC 34 part7 Special flange
		0,12	60		
		0,18	60		
		0,25	60		
		0,50	30		
		0,75	20		
1,00	15				
GFM-E	PFM-E	0,06	35	35	Size 56 Synchronous speed = 1500 [1/min] Rated output = 0,09 [kW] Design B34 acc.to DIN IEC 34 part7 Special flange
		0,12	35		
		0,18	35		
		0,25	35		
		0,50	30		
		0,75	20		
1,00	15				
GFM-F	PFM-F	0,06	60	60	Size 63 Synchronous speed = 1500 [1/min] Rated output = 0,18 [kW] Design B34 acc.to DIN IEC 34 part7 Flange C90 acc.to DIN 42948
		0,12	60		
		0,18	60		
		0,25	60		
		0,50	60		
		0,75	40		
1,00	30				
GFM-G	PFM-G	0,06	60	60	Size 71 Synchronous speed = 1500 [1/min] Rated output = 0,37 [kW] Design B34 acc.to DIN IEC 34 part7 Flange C105 acc.to DIN 42948
		0,12	60		
		0,18	60		
		0,25	60		
		0,50	60		
		0,75	60		
1,00	60				

- Subject to modifications -

Order-designation:

Gear-type pump unit



with motor	Type		Flow rate [l/min]	Sealing material	Motor	Spare parts							
	with motor	without motor				Order-no. gear-type pump Sealing material		Clutch					
						NBR	FPM	for	Order-no.				
GFM-D	PFM-D	0,06 0,12 0,18 0,25 0,50 0,75 1,00	NBR (Perbunan) Ⓟ	230/400V 50Hz IP55	351.013-42	351.013-65	GFM-D PFM-D	102.013-65					
					351.014-42	351.014-65							
					351.015-42	351.015-65							
					GFM-E	PFM-E	0,06 0,12 0,18 0,25 0,50 0,75 1,00	NBR (Perbunan) Ⓟ	230/400V 50Hz IP55	351.016-42	351.016-65	GFM-E PFM-E	102.013-65
										351.017-42	351.017-65		
										351.018-42	351.018-65		
										GFM-F	PFM-F	0,06 0,12 0,18 0,25 0,50 0,75 1,00	FPM (Viton) Ⓟ
351.003-42	351.003-65												
351.004-42	351.004-65												
GFM-G	PFM-G	0,06 0,12 0,18 0,25 0,50 0,75 1,00	FPM (Viton) Ⓟ	Special de- sign motor on request									
					351.006-42	351.006-65							
					351.007-42	351.007-65							
					GFM-G	PFM-G	0,06 0,12 0,18 0,25 0,50 0,75 1,00	FPM (Viton) Ⓟ	Special de- sign motor on request				
										351.009-42	351.009-65		
										351.010-42	351.010-65		
										351.011-42	351.011-65		
351.012-42	351.012-65												
351.013-42	351.013-65												
351.014-42	351.014-65												

- Subject to modifications -

Order-example:

Gear-type pump unit GFM-D with a flow rate of 0,18 l/min, sealing material NBR, voltage 230/400V, frequency 50Hz, protection system IP55.

Order-designation: Gear-type pump unit GFM-D/0,18/P : 230/400V 50Hz IP55



- Subject to modifications -

